

Campus Master Plan





Agenda

Process Overview

Draft Plan Proposals

- Facilities Reinvestment

- Academics

- Athletics

- Housing

- Entry and Arrival

- Campus-wide Solutions

- Sustainability

STATE OF WISCONSIN
DIVISION OF FACILITIES DEVELOPMENT

UNIVERSITY OF WISCONSIN
WHITEWATER

UNIVERSITY OF WISCONSIN
SYSTEM ADMINISTRATION



KEN SAIKI DESIGN
ADMINISTRATION
LANDSCAPE DESIGN GUIDELINES

AYERS SAINT GROSS
CAMPUS PLANNING
SPACE PLANNING

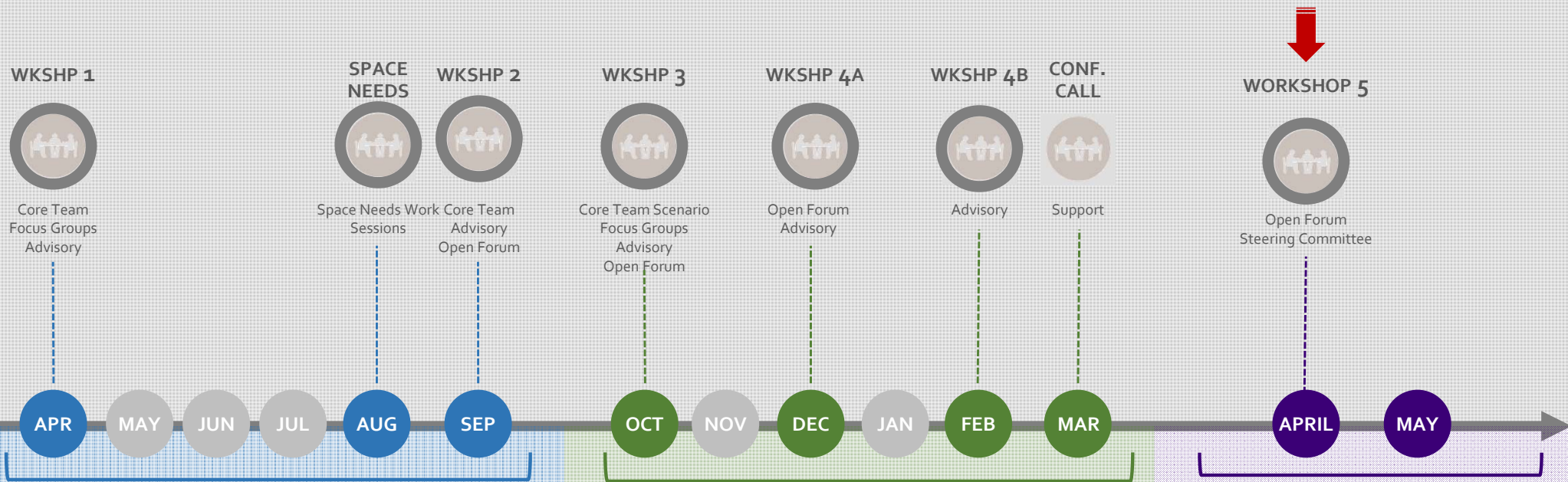
RING AND DUCHATEAU
MECHANICAL-ELECTRICAL ENGINEERING,
FIBER OPTIC BACKBONE STUDY

STRAND ASSOCIATES
CIVIL AND TRAFFIC
ENGINEERING

MIDDLETON CONSTRUCTION CONSULTING
COST ESTIMATING

EPPSTEIN UHEN ARCHITECTS
BUILDINGS CONDITIONS ASSESSMENT
ARCHITECTURAL DESIGN GUIDELINES

Team



OBSERVATIONS AND PLAN DIRECTION

WORKSHOP #1: APRIL 2013

OBSERVATIONS

DATA COLLECTION AND VERIFICATION *

FACILITIES CONDITIONS

SPACE NEEDS: AUGUST 2013

SPACE NEEDS ANALYSIS *

SPACE NEEDS WORK SESSIONS *

WORKSHOP #2: SEPTEMBER 2013

GUIDING PRINCIPLES

CONCEPT PLAN

PLAN DEVELOPMENT

WORKSHOP #3: OCTOBER 2013

PLANNING SCENARIOS

FINAL SPACE NEEDS ANALYSIS *

DRAFT TABLE OF CONTENTS

WORKSHOP #4A: DECEMBER 2013

OPEN FORUMS

DESIGN GUIDELINES

WORKSHOP #4B: FEBRUARY 2014

DRAFT PLAN DESIGN GUIDELINES

WEB-EX: MARCH 2014

DRAFT PLAN REFINEMENT

IMPLEMENTATION STRATEGY

FINAL PLAN REFINEMENT

WORKSHOP #5: APRIL/MAY 2014

FINAL PLAN OPEN FORUM

BEYOND

BOARD OF REGENTS PRESENTATION

FINAL REPORT DISTRIBUTION

* SPACE NEEDS FOCUSED SESSIONS

Campus Involvement

Open Forums:
Faculty, Staff, and Students

Focus Groups:
Key issues, areas of focus, space needs

Advisory Committee:
Campus wide representation for guidance

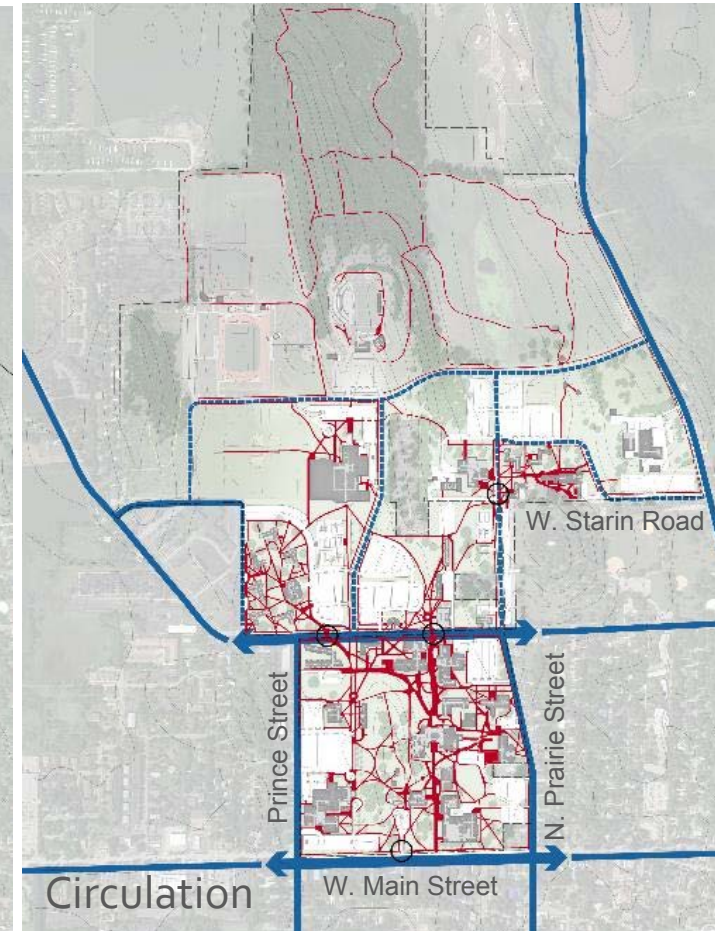
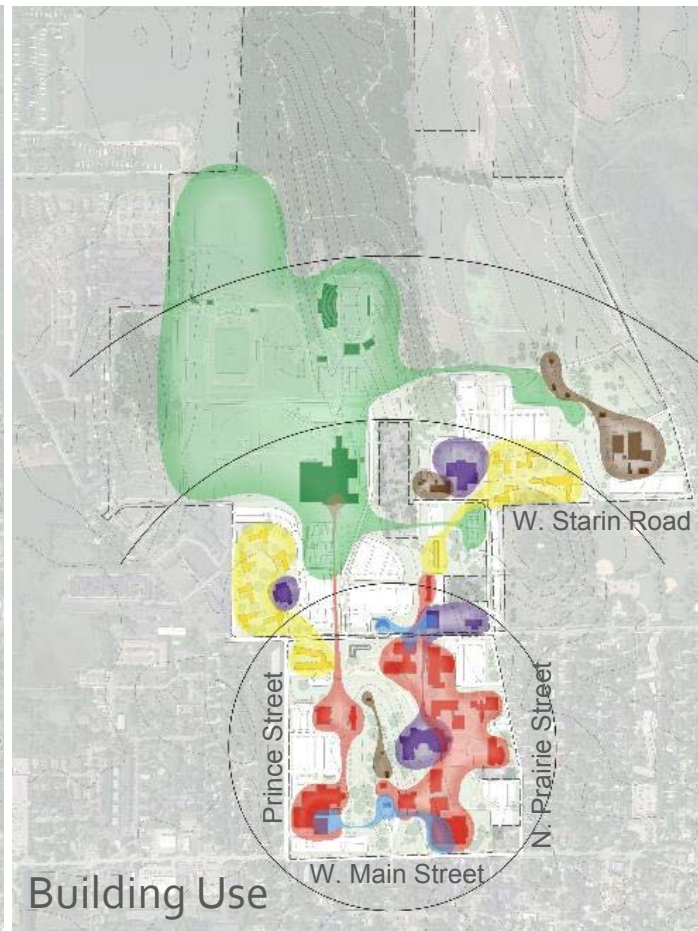
Executive Leadership:
Plan direction

Master Plan Website: Information
and comment



Observations

Natural and Built Systems



- Natural Areas
- Athletic Fields
- Drumlin
- Defined Campus Greens
- Undefined Open Spaces
- Plaza
- Arboretum
- Spine

- Academic
- Library and Public Interface
- Student Life
- Residence Hall
- Athletic
- Support/Other

- Vehicular Circulation
- Pedestrian Path
- Pedestrian Crossings



Observation Summary

- Mix of old and new
- Quality inequality
- Identity
- Natural setting
- Residence life
- Pedestrian safety
- Accessibility
- Parking distribution
- Welcome

OBSERVATIONS

GUIDING PRINCIPLES

Mix of old and new
Quality inequality

Quality and Quantity of Space

Identity
Welcome

Identity

Residence life
Athletics
Recreation

Community

Pedestrian safety
Accessibility
Parking distribution

Connections

Natural setting

Sustainability and Stewardship



Planning Principles

Mission

Align the physical campus with the University's mission and values and support the objectives outlined in the Strategic Plan.

Quantity and Quality of Space

Address existing and projected space deficits on campus and ensure consistently high quality space campus-wide.

Identity

Build on existing strengths to further distinguish the University of Wisconsin Whitewater through its physical campus; define campus edges and a clear arrival experience to welcome and encourage engagement with the community.

Community

Develop a compact, residential campus with amenities for students, faculty, and staff that promote interaction, enhance quality of life, and accommodate activity seven days a week.

Connections

Create a dynamic campus with well-defined and accessible pathways that flow naturally between buildings and grounds.

Sustainability and Stewardship

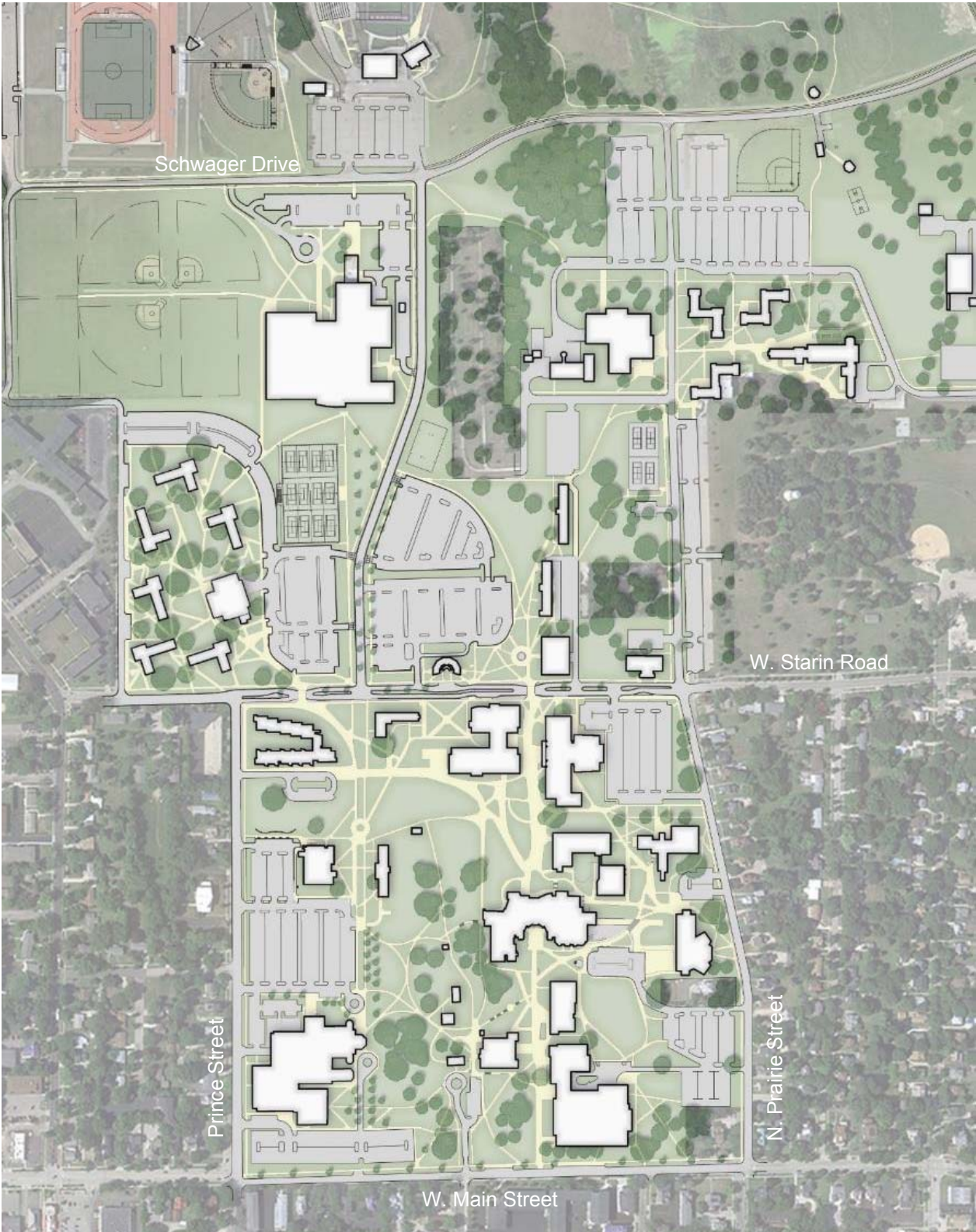
Further sustainable practices by highlighting natural features unique to Whitewater, promoting efficient use of resources, and connecting people with each other and with their environment.

Scenario Planning



Existing Conditions

□ Existing Buildings



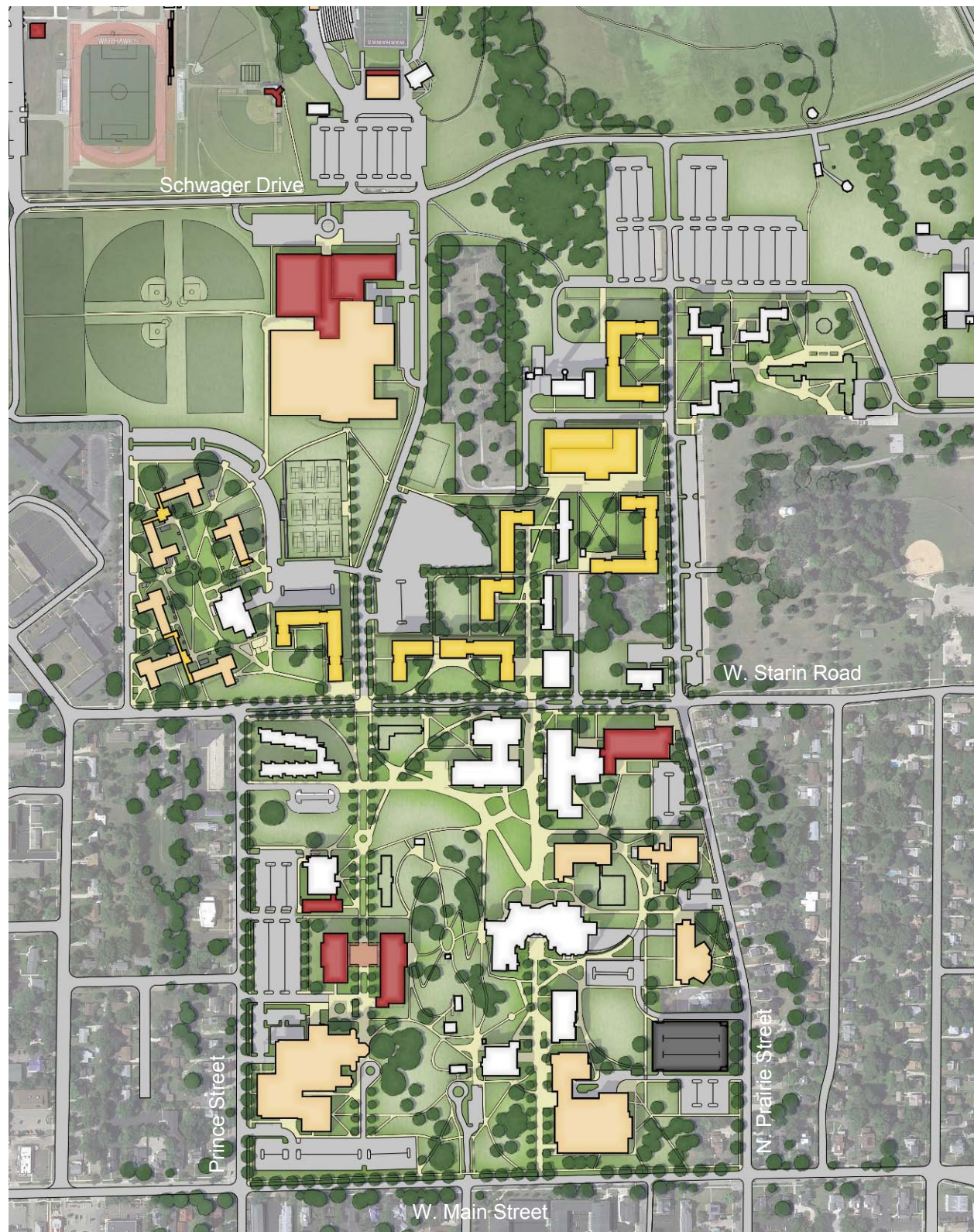
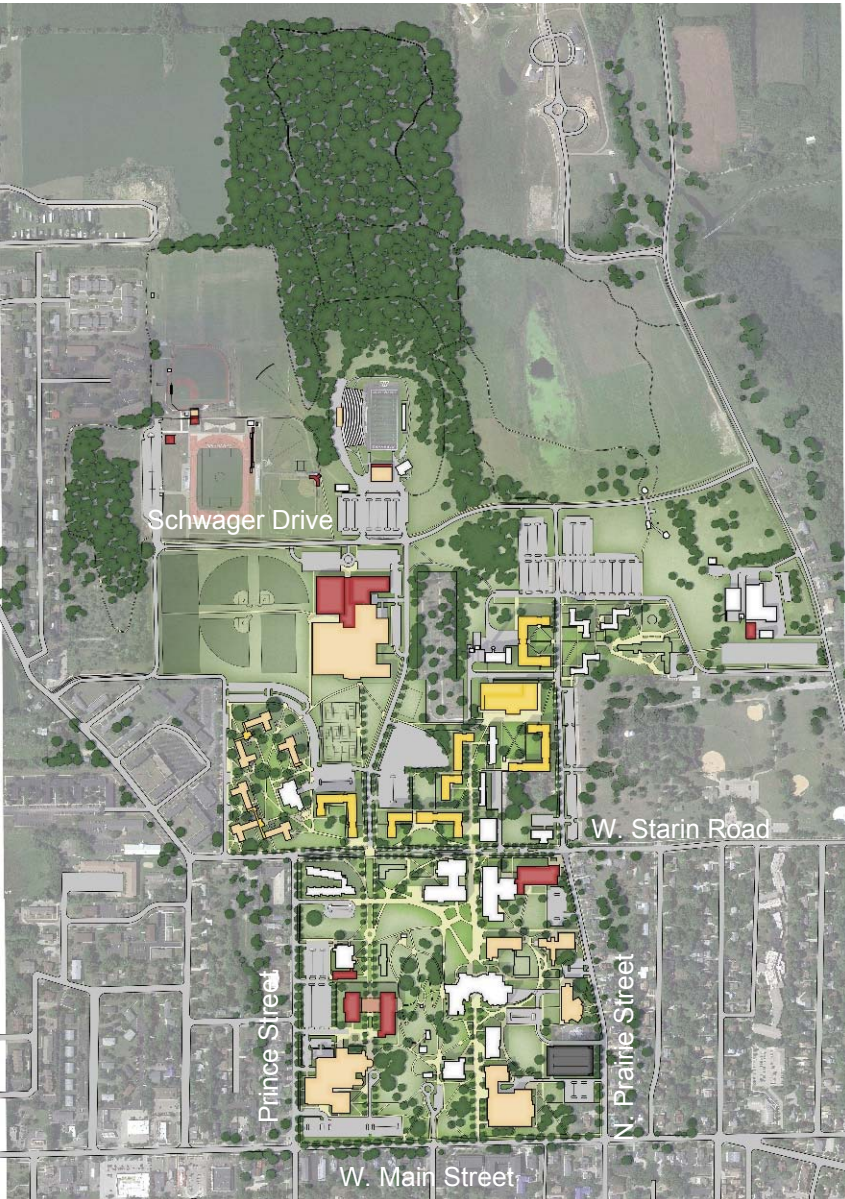
Campus Master Plan

- Existing Buildings
- Renovated Buildings
- Proposed New Construction
- Long-term Demolition



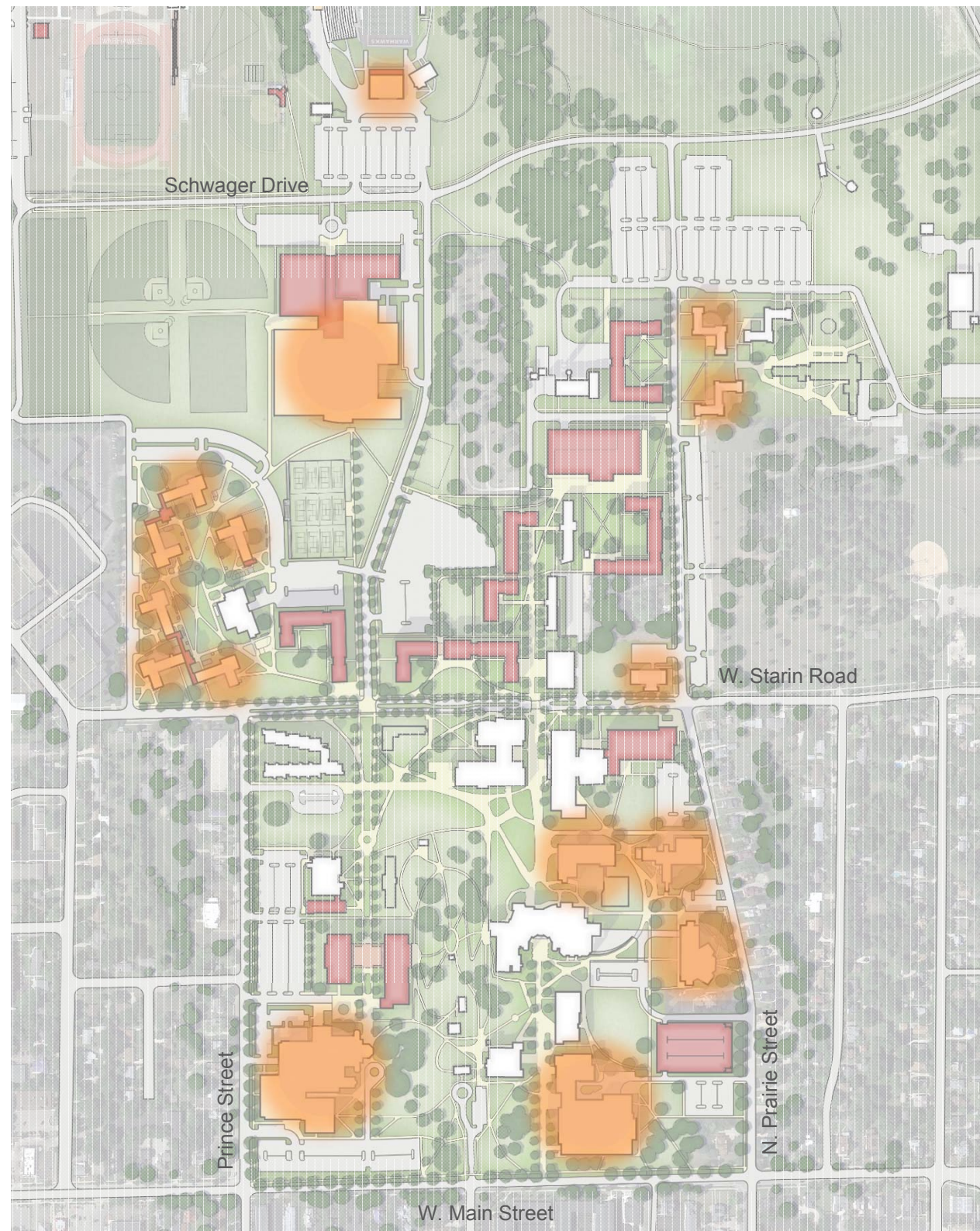
Campus Master Plan

- Existing Buildings
- Renovated Buildings
- Proposed New Construction
- Proposed Housing Construction
- Long-term Demolition



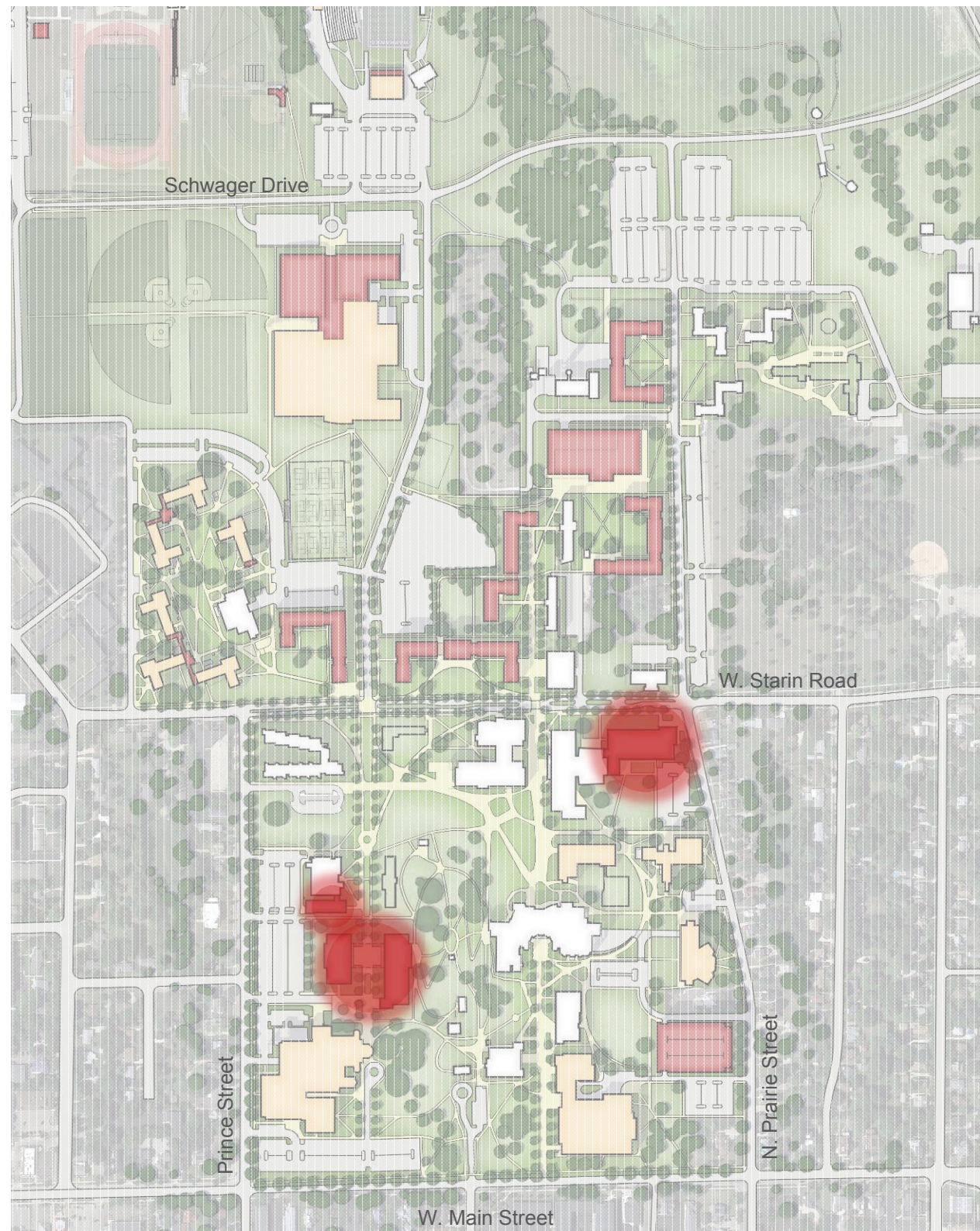
Facilities Reinvestment

- Identified renovation needs:
 - Winther
 - Heide
 - Greenhill Center of the Arts (Phase 1)
 - Andersen Library (Phase 1)
 - Roseman (Phase 1)
 - Williams Center / DLK Fieldhouse
 - West Campus residence halls
 - Stadium Services
 - Baseball Building



Academics

- Plan reflects current space needs projections
- Use academic sites to reinforce campus malls
- Student Success, Academic Building 1, Academic Building 2

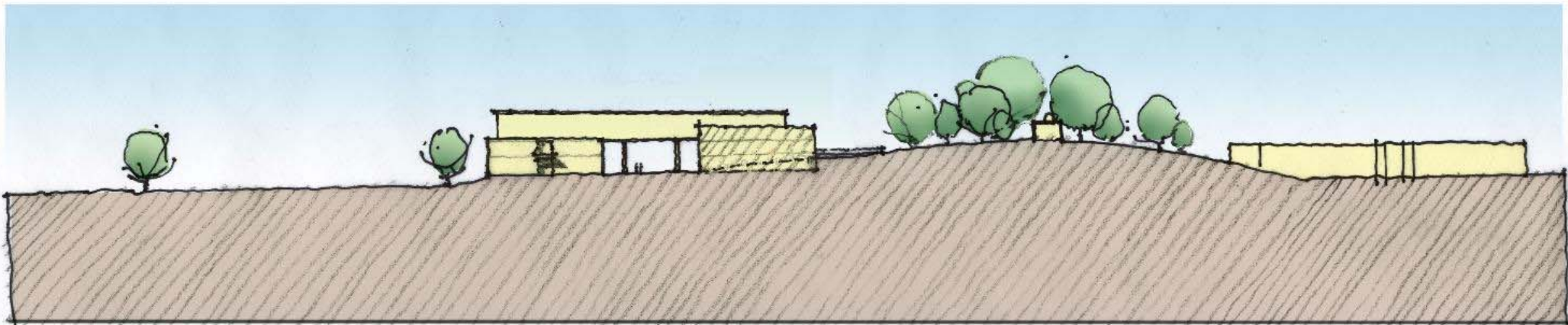


Academics

- Plan reflects current space needs projections
- Use academic sites to reinforce campus malls
- Adjacency to existing facilities impacts site selection

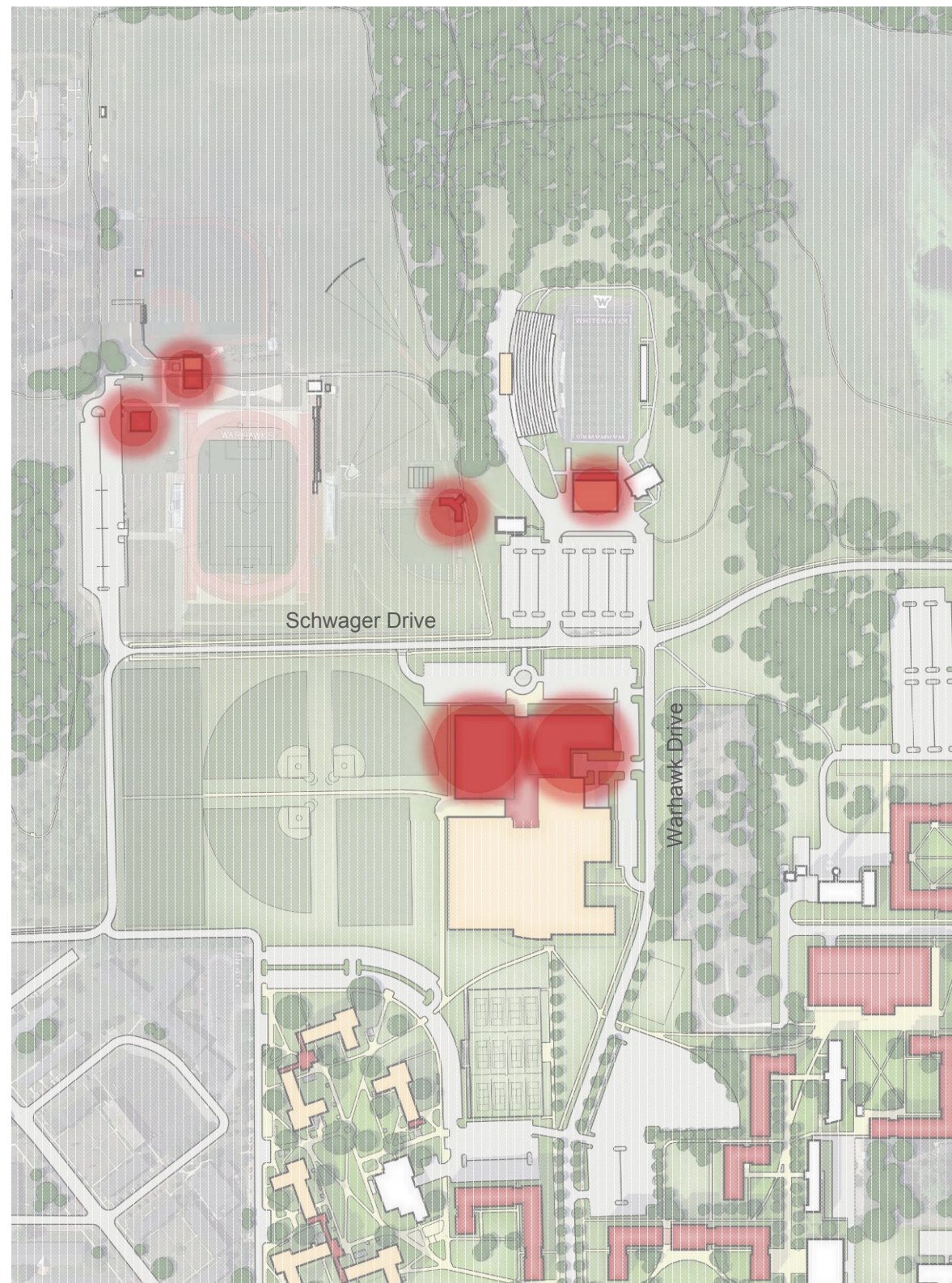
- Existing Buildings
- Renovated Buildings
- Proposed New Construction
- Long-term Demolition



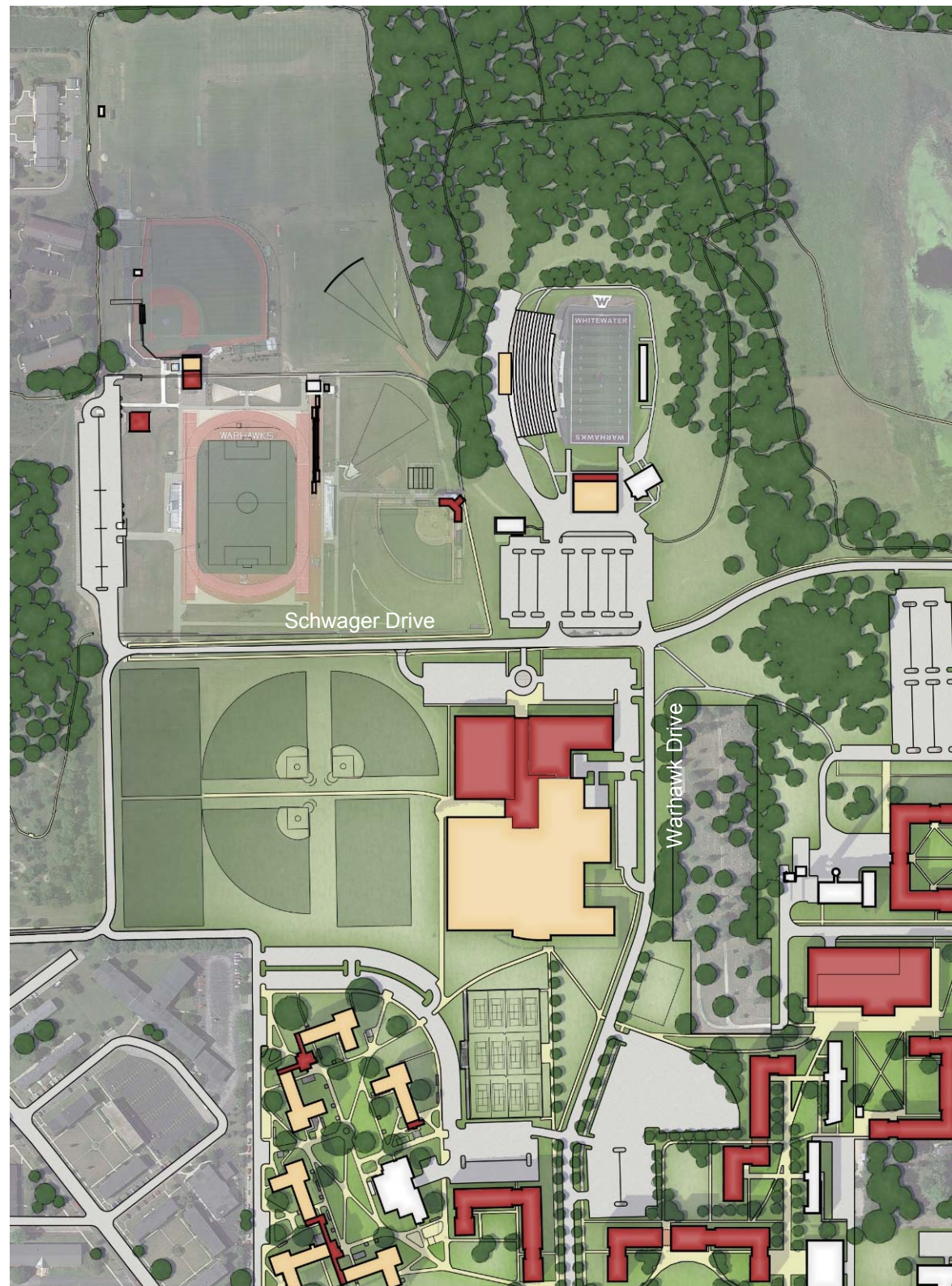


Athletics

- Accessible Gymnasium
- Indoor Tennis Facility
- Baseball: restrooms, concessions, storage
- Softball stadium
- Stadium Athletics Service Building: classroom, offices, press box, team support



Athletics



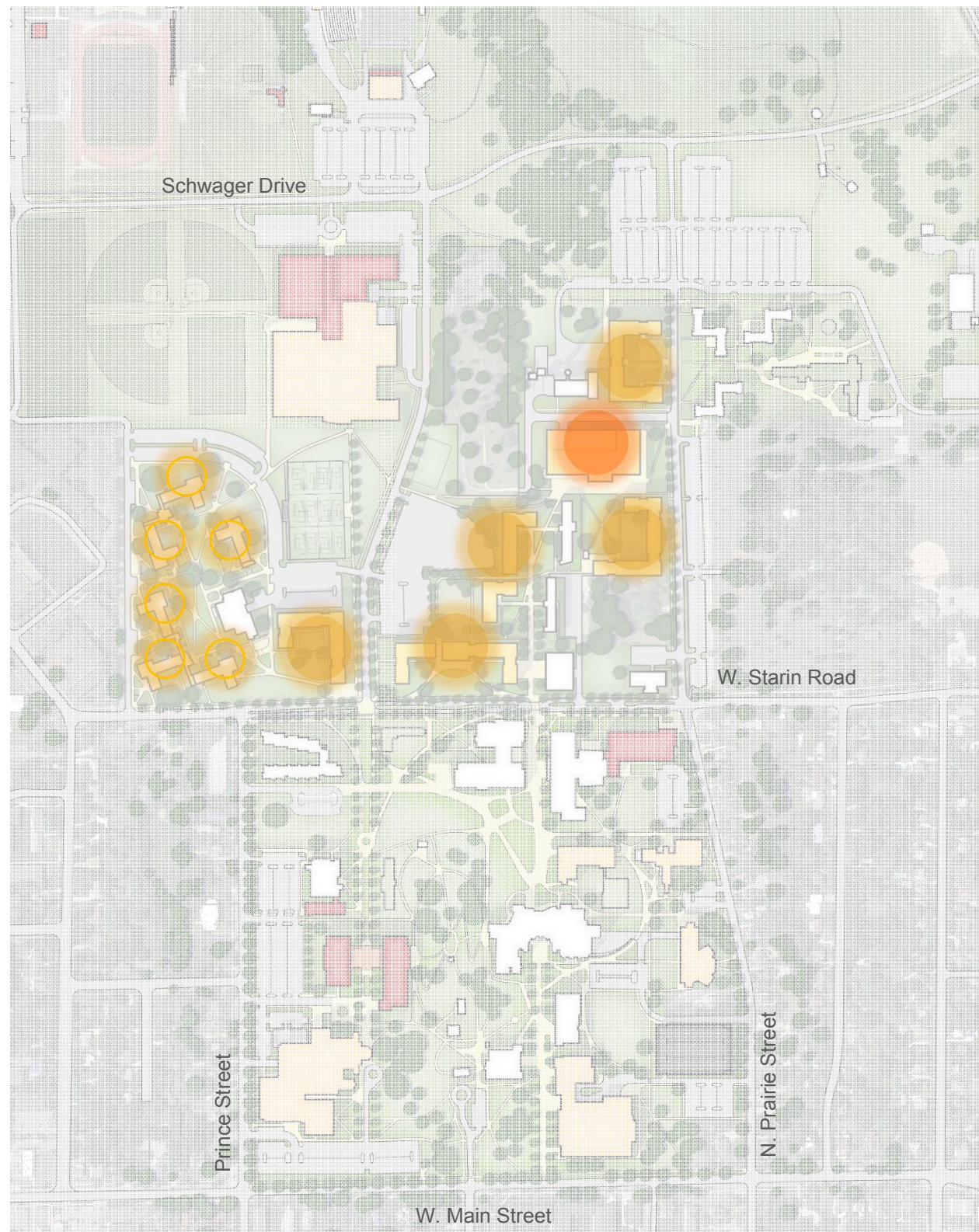
- Existing Buildings
- Renovated Buildings
- Proposed New Construction
- Long-term Demolition

Athletics



Housing

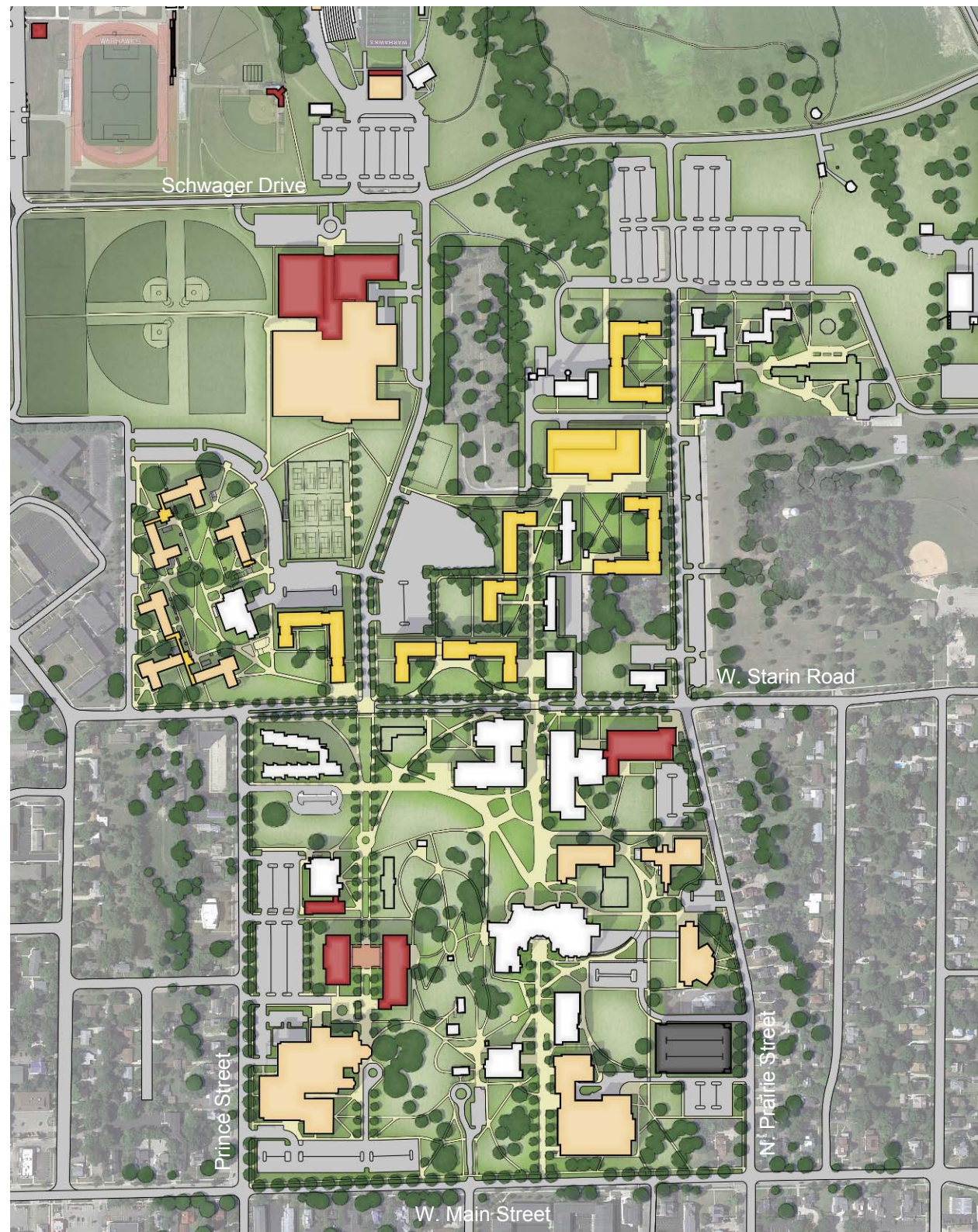
- Significant need identified
 - 5 Residence Halls with 400 semi-suite beds per community (assume 325 GSF/bed)
- Use new housing sites to connect campus community
- New Dining Hall
- West Campus renovations



Housing

- Significant need identified
 - 5 Residence Halls with 400 semi-suite beds per community (assume 325 GSF/bed)
- Use new housing sites to connect campus community
- New Dining Hall:
 - Allows for Esker to stay on-line until complete
 - New dining site serves east campus and new facilities

- Existing Buildings
- Renovated Buildings
- Proposed New Construction
- Proposed Housing Buildings
- Long-term Demolition
- Proposed Parking Structure



Housing



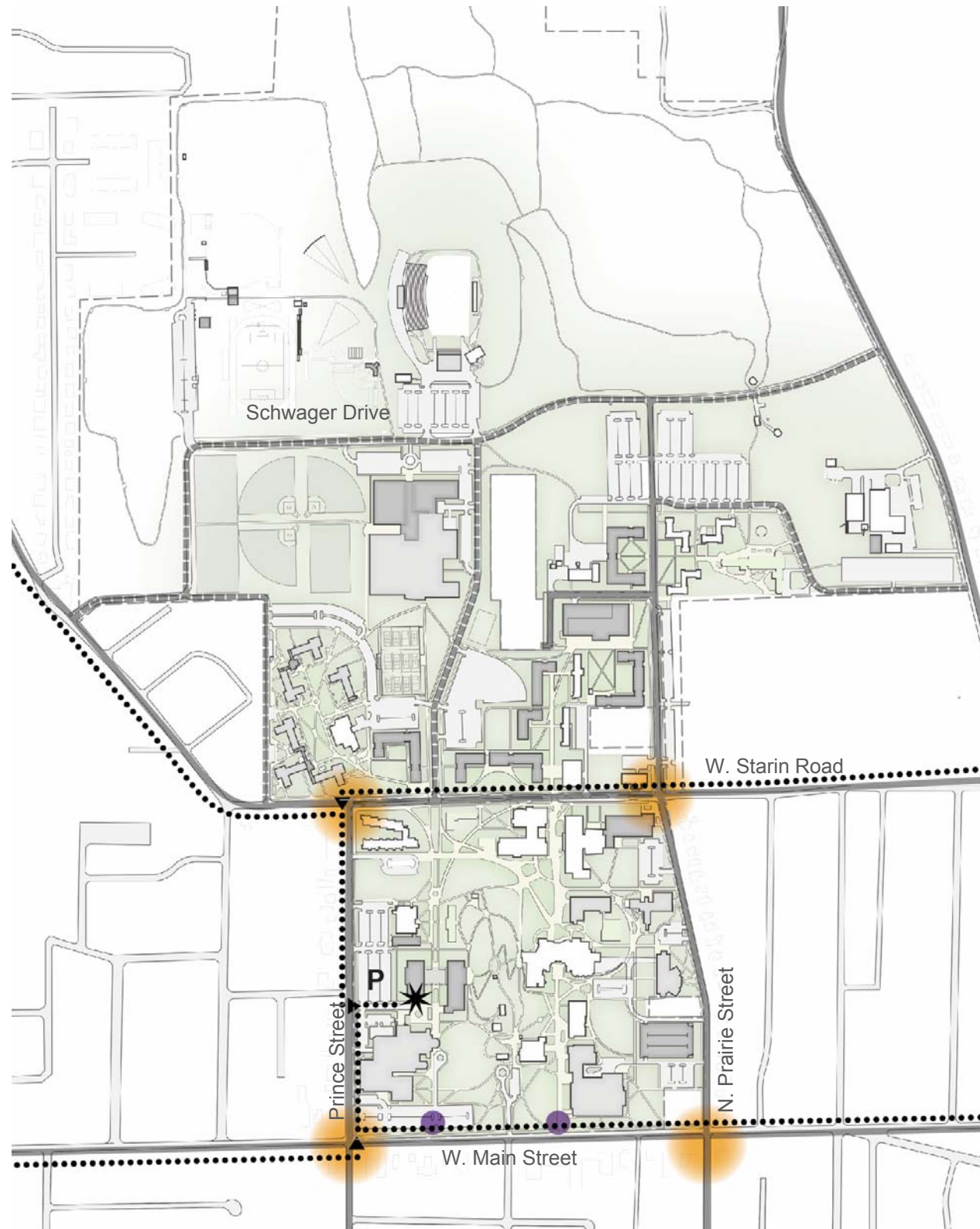
Entry & Arrival

- Coordinate with City of Whitewater to redirect signage to Prince Street entry point leading to Student Services (*aka one stop shop*)

- • Develop clear signage and edge treatment of critical corner intersections









- • Reinforce pedestrian malls with pedestrian gateways

- • Directional signage is important and requires coordination with City of Whitewater



Open Space

- Reinforces pedestrian malls
- Creates active space adjacent to housing
- Preserves natural areas

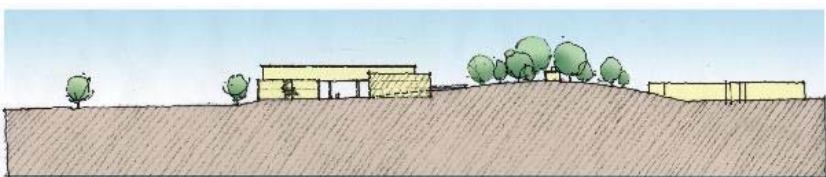
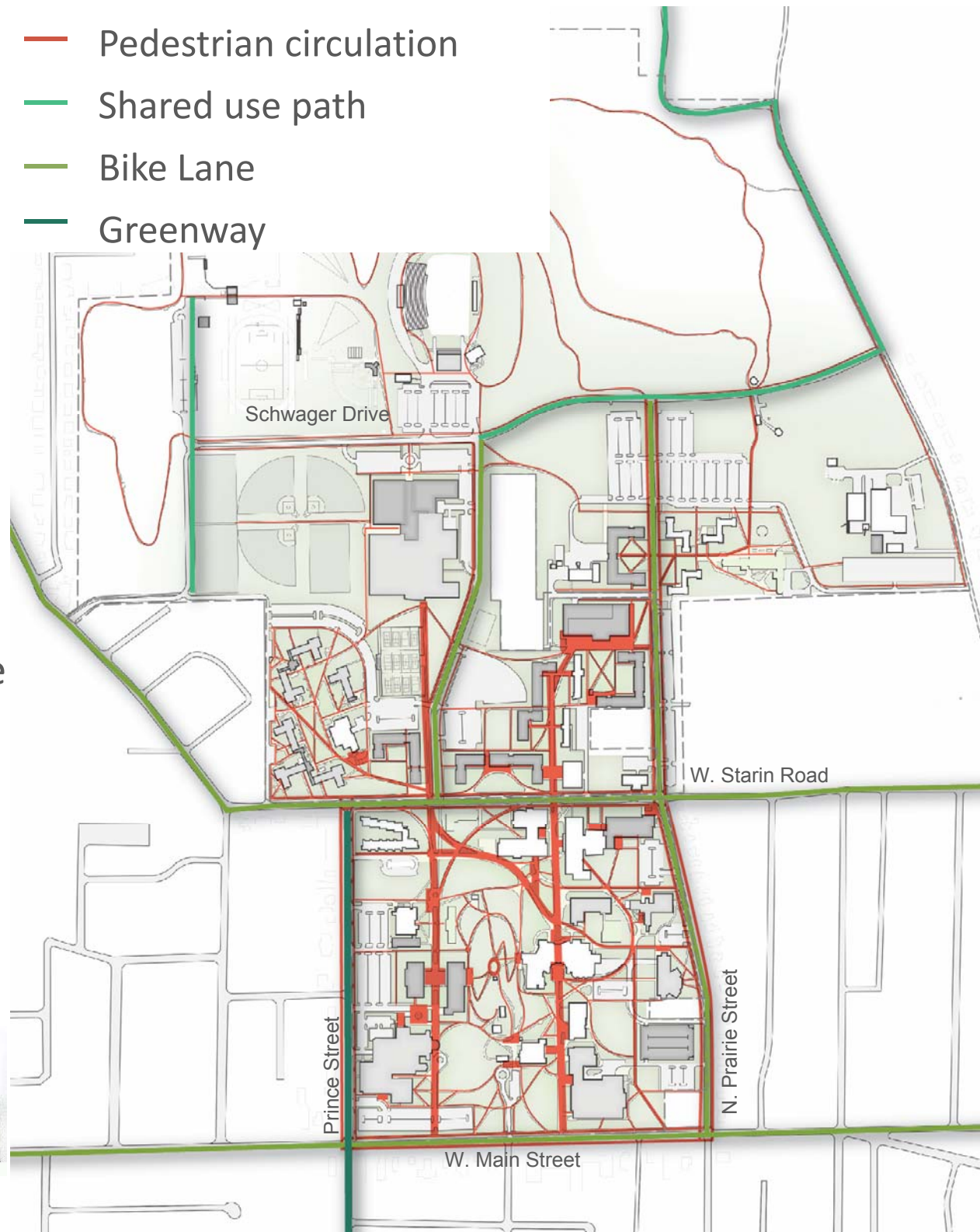
-  Natural areas
-  Quadrangles
-  Plazas
-  Athletic / Rec. fields
-  Fountain
-  City park
-  Pedestrian mall
-  Axis



Campus Connections

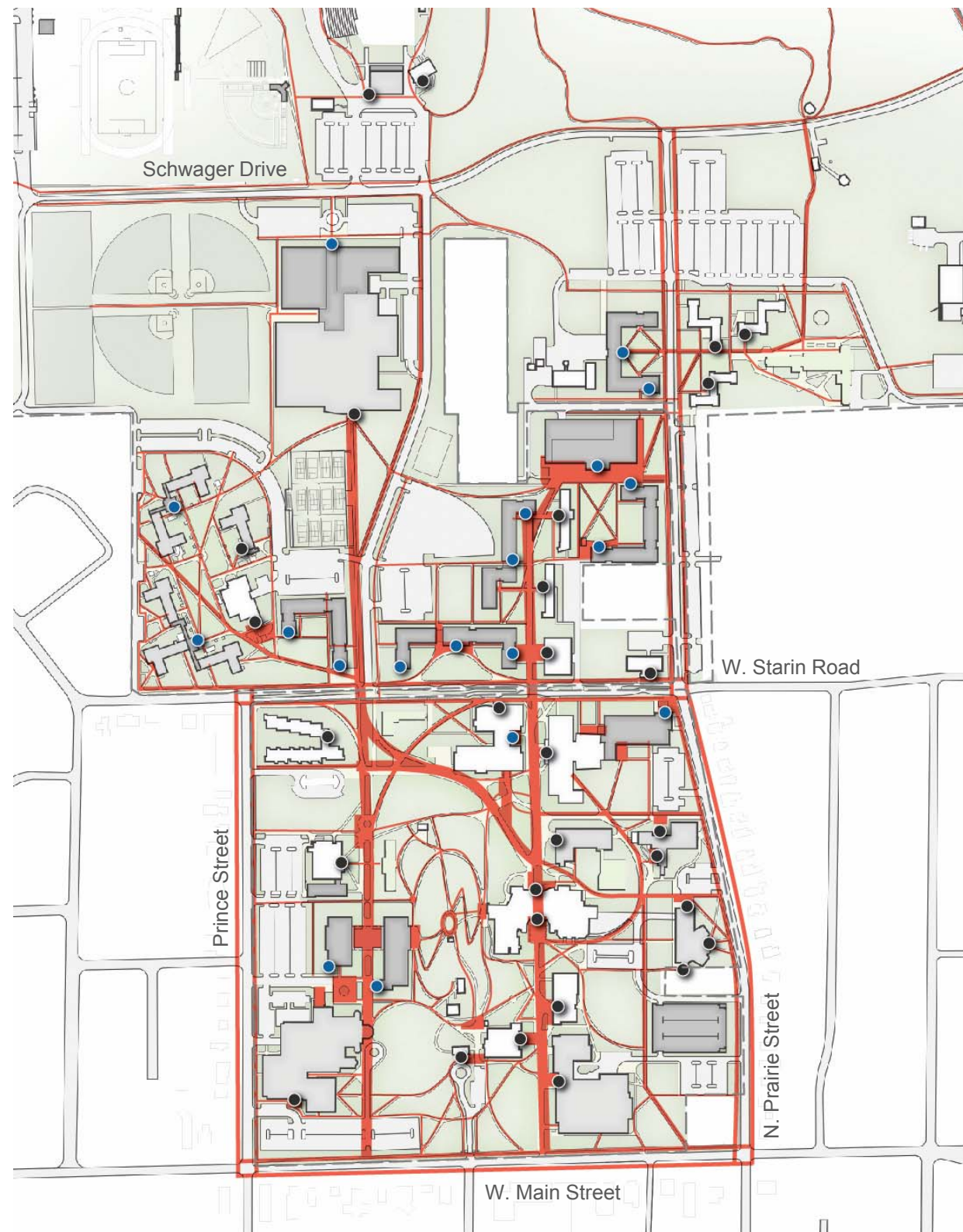
- Circulation reinforced by strategic building locations
 - Use new housing sites to help connect campus
 - Use academic sites to reinforce campus malls
- Use new building to create accessible routes across the drumlin at upper level
- Clear connections to identified trails and bike routes

- Pedestrian circulation
- Shared use path
- Bike Lane
- Greenway



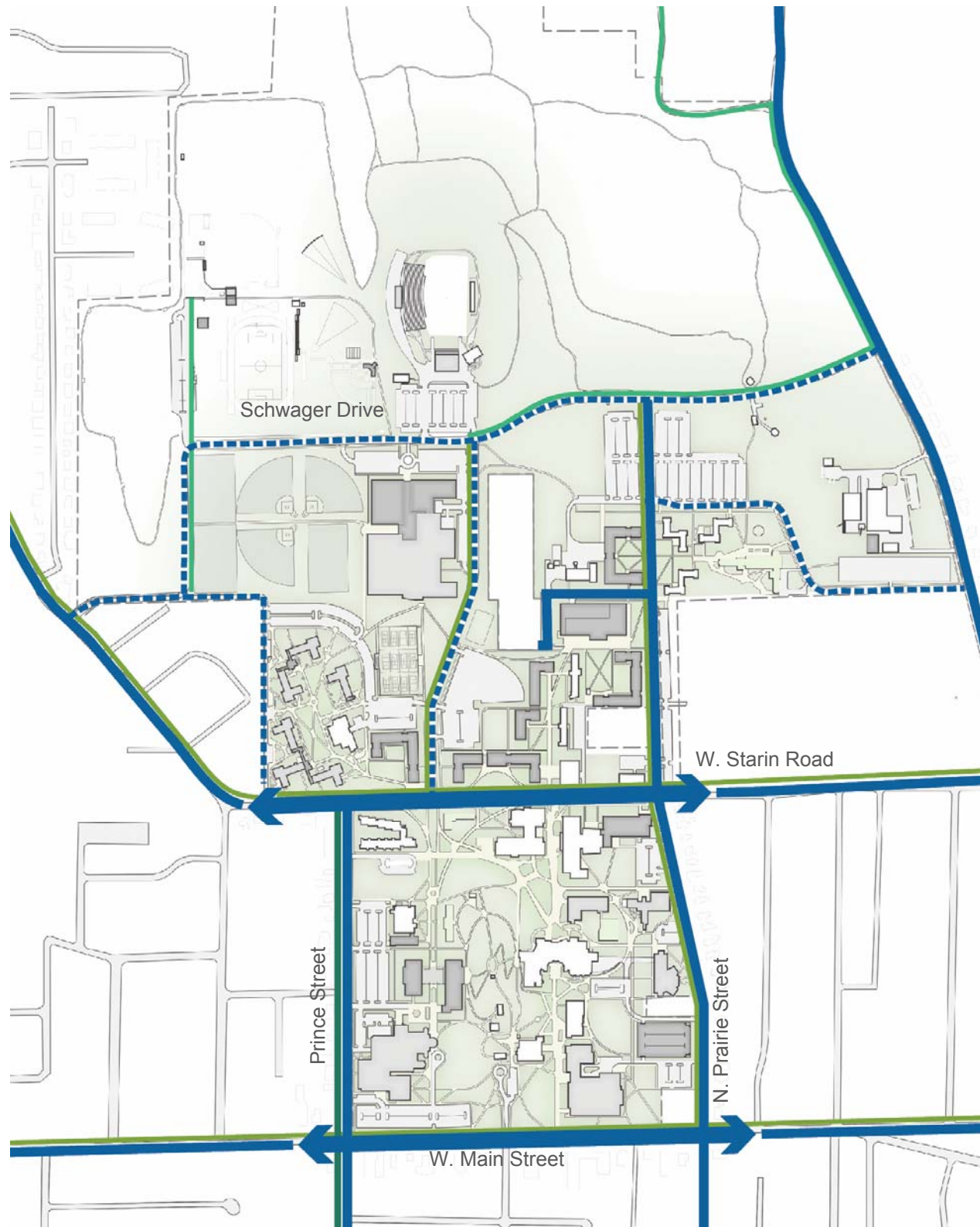
Building Entry

- Main entries reinforced major pedestrian connections
- Building entries help activate adjacent open space
- Existing main entry
- Proposed main entry



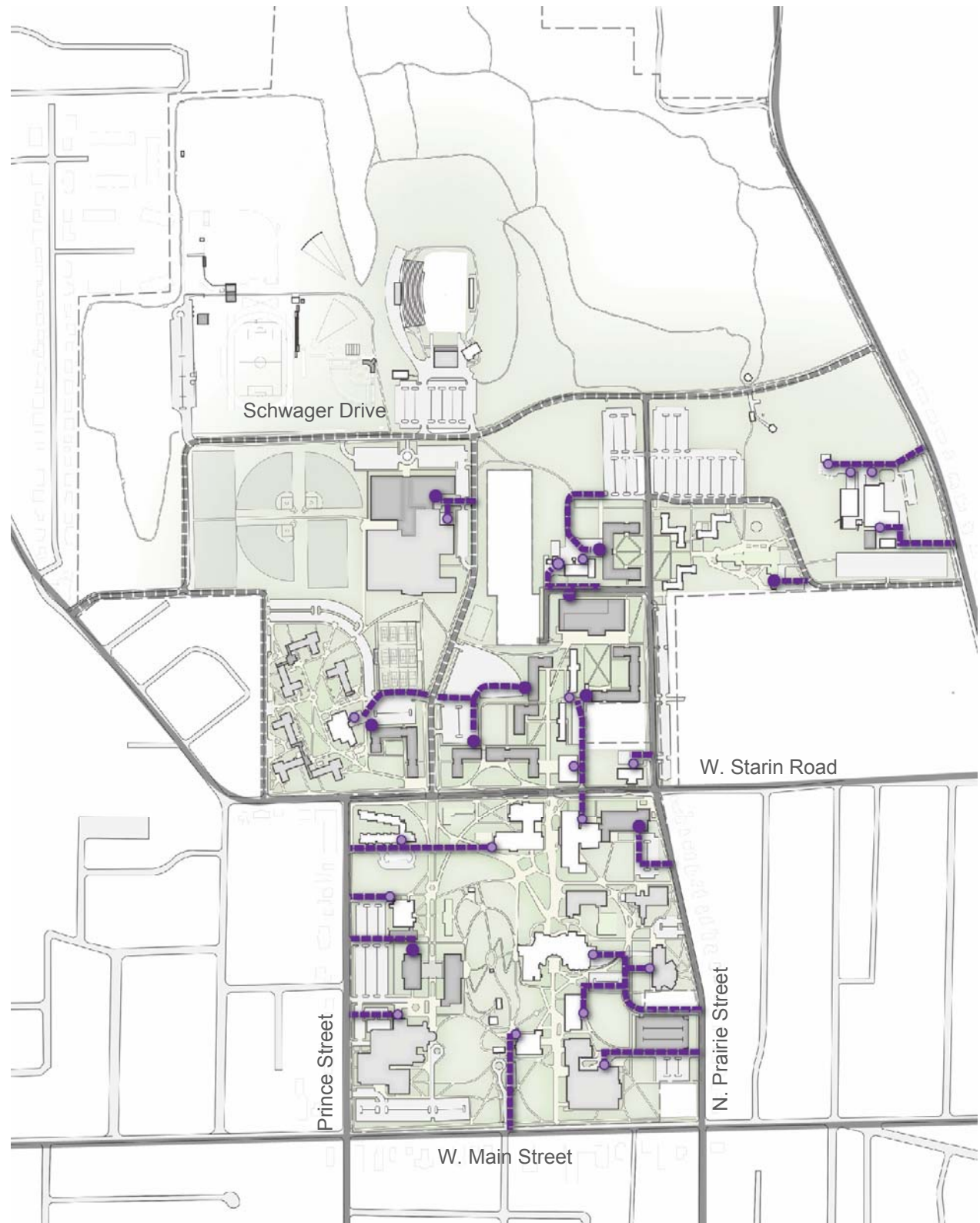
Vehicular Circulation

- Campus Streets
- City Streets
- Shared Use Path
- Bike Lane
- Greenway



Service

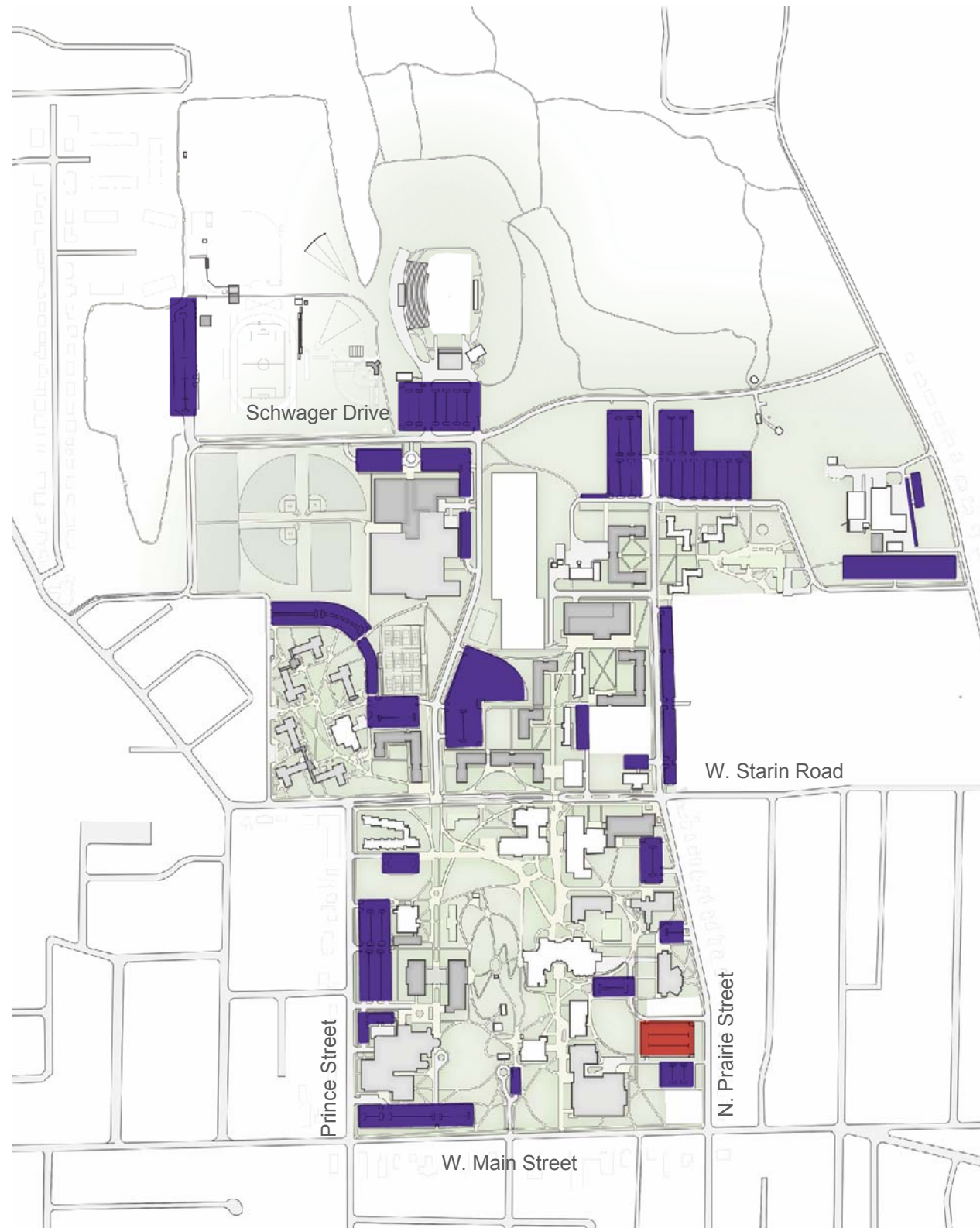
- Campus Streets
- City Streets
- Existing Service
- Proposed Service



Parking

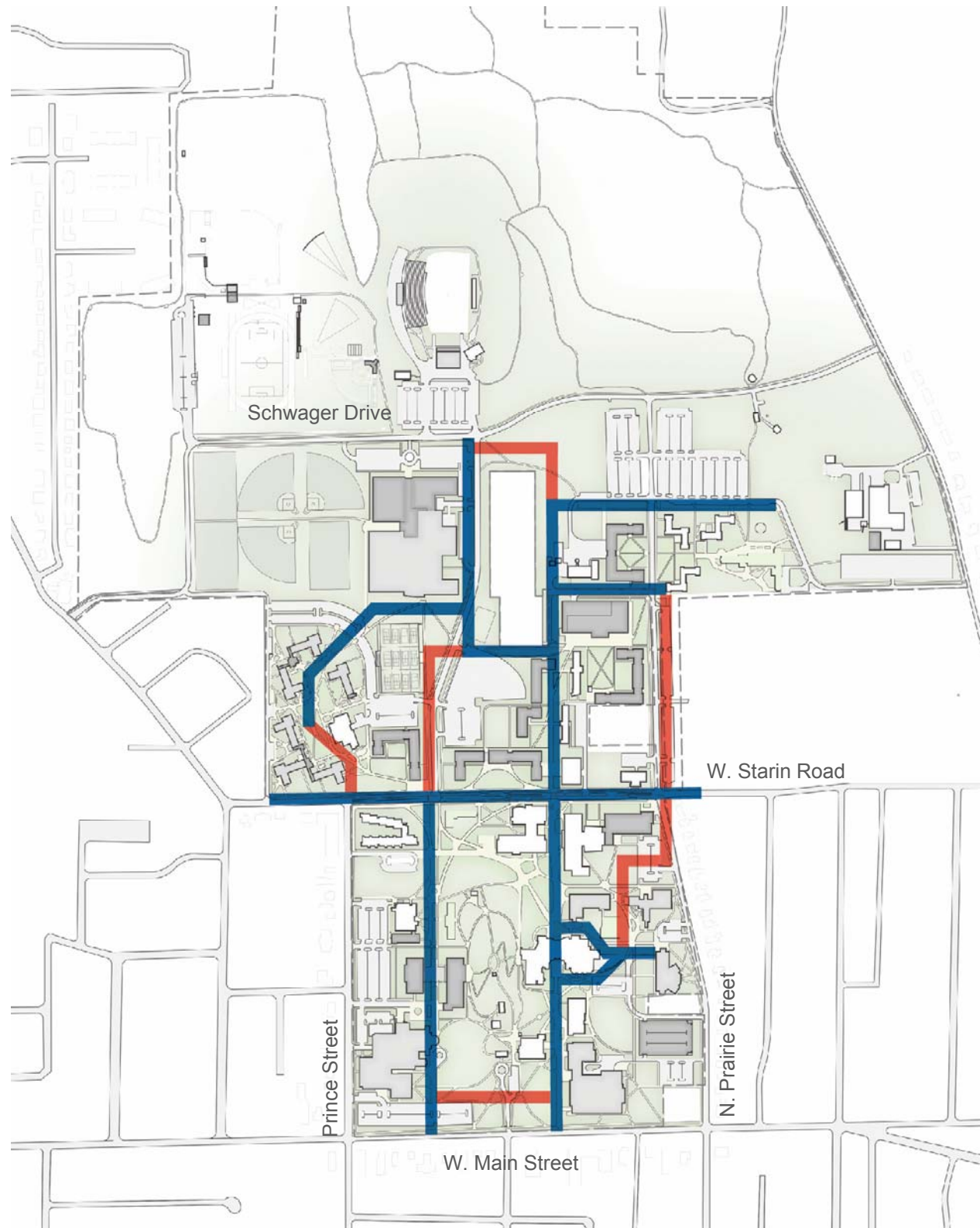
- Initial analysis suggests campus-wide surplus
- Proximity of current parking is a challenge
- New buildings will displace parking
- Impacts on parking policy decisions
- Future parking structure sites tested for viability

- Surface Parking
- Parking Structure

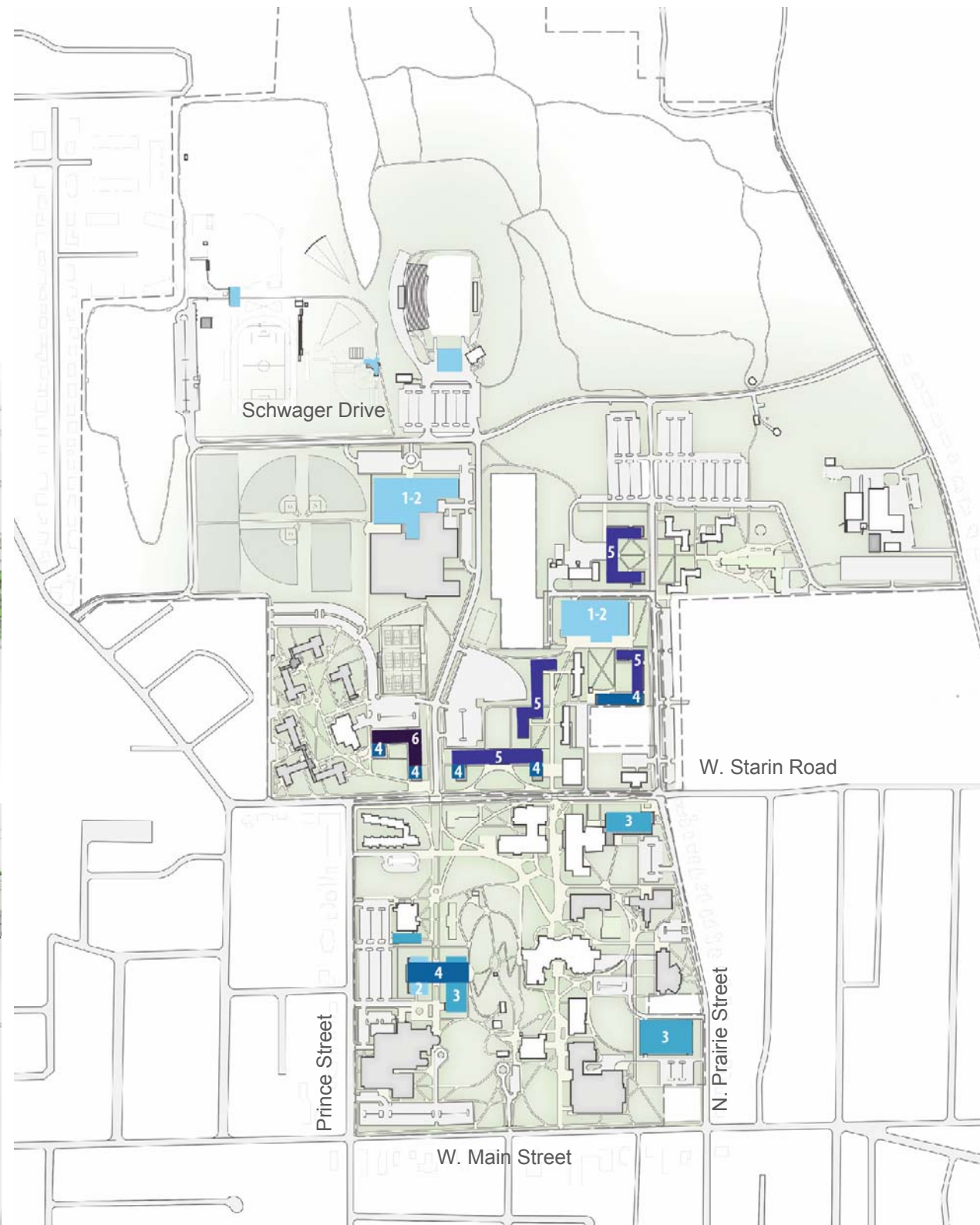


Utilities

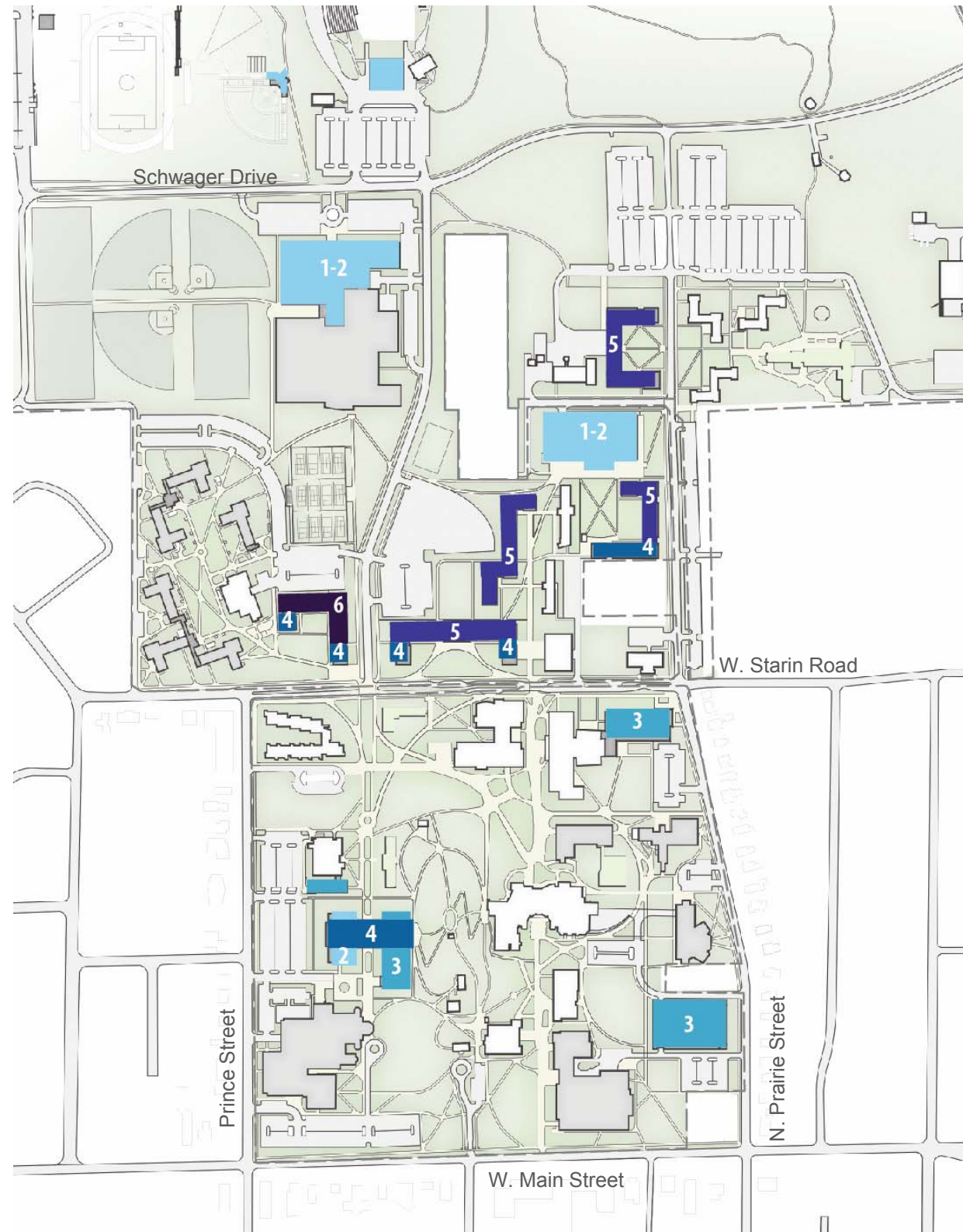
- Existing Corridor
- Proposed Corridor



Massing & Height



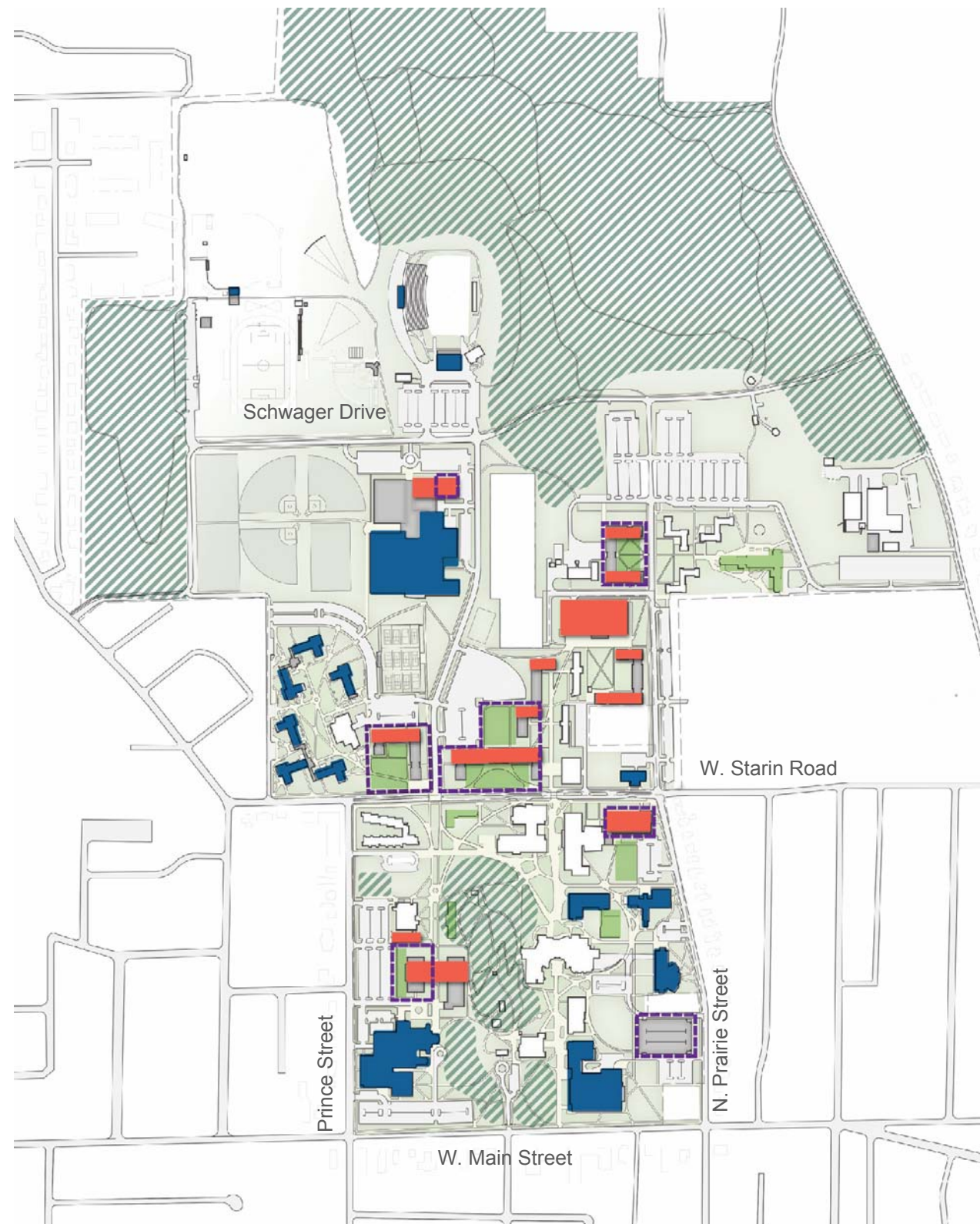
Massing & Height



Sustainability

- Solar orientation of buildings
- Grey-field redevelopment
- Reuse of buildings
- New green space/pervious area
- Preserved natural areas

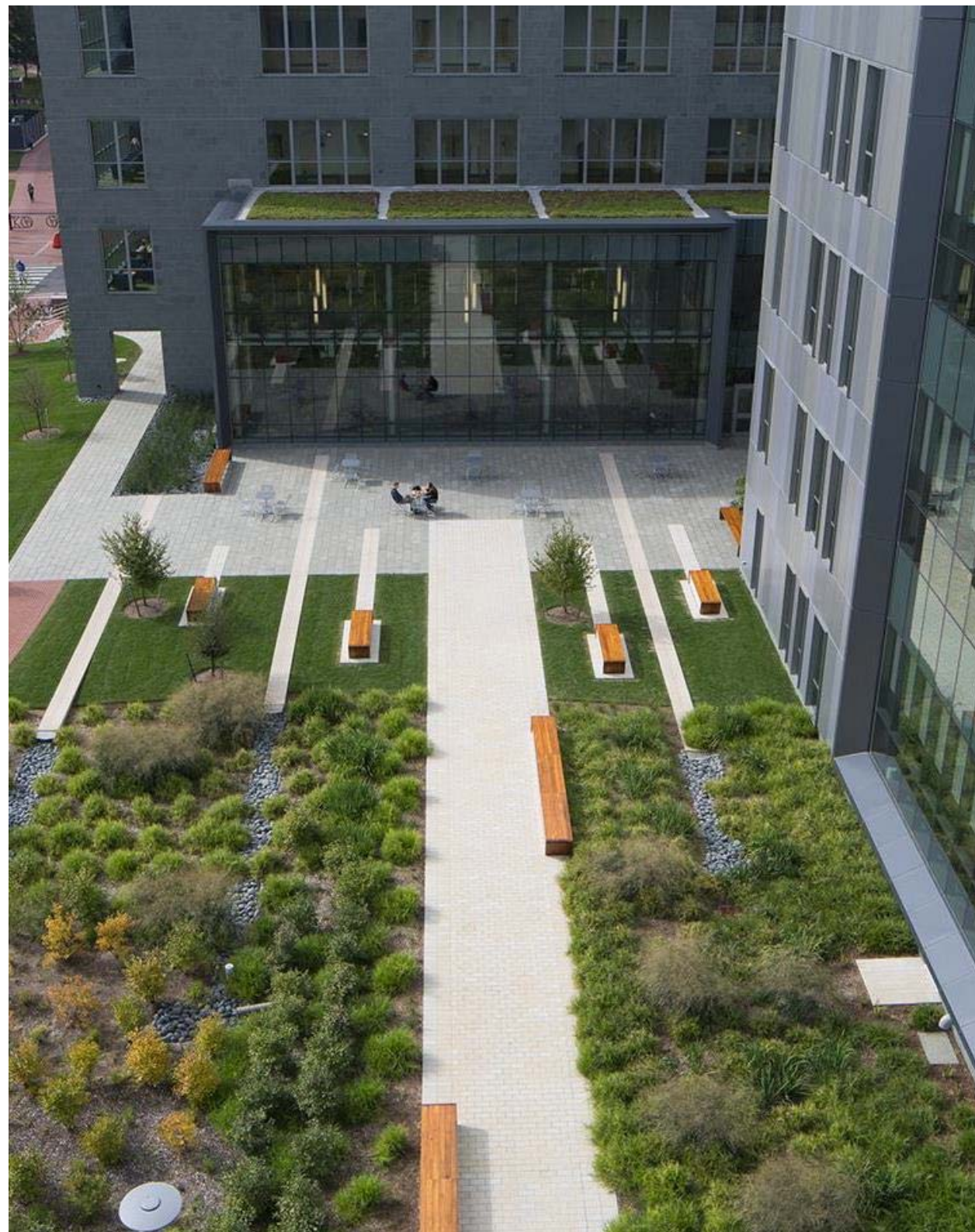
- Stormwater BMPs
- Green roofs
- Sustainability education through landscapes



Sustainability

Campus Intent

- Signatory of American College and University President's Climate Commitment (ACUPCC)
- AASHE STARS self-assessment
- Define attainable goals for campus through a Sustainability Plan



Campus Master Plan

- Existing Buildings
- Renovated Buildings
- Proposed New Construction
- Long-term Demolition



Campus Master Plan



Campus Master Plan



Direct any questions or comments to masterplan@uww.edu